



## Features

- 10.4" (1024x768) Digital TFT LCD
- Aspect Ratio: 4:3
- Input Signal VGA / DVI-D/ HDMI 1.3a
- Maximum Support Resolution 1920x1080
- Stereo Audio Amplifier, Output 2W@4Ω Speaker
- Audio Line-In
- 4W / 5W Resistive Touch Panel
- 5 Key Buttons Control
- 8 Language OSD Menu
- LED Backlight
- Wide Operation Voltage +11V ~ +28V

## Applications

- Industrial
- Medical Environment
- Instrument Display
- Kiosk
- Security
- Signage
- Office Electronics
- Home Application
- Educate Application



# Specifications

<i>LCD</i>	
Panel Size	10.4"
Resolution (Pixels)	1024x768
Color	262K
Luminance w/o RTP	400 cd/m <sup>2</sup>
Luminance (RTP)	320 cd/m <sup>2</sup>
Contrast Ratio	500
View Angle	75 / 75 / 60 / 80
LED Life Time	30K (Min)
<i>Power Requirement</i>	
Power Input (DC Jack 2.1 $\phi$ )	+11V ~ +28VDC
Power Consumption@+12V	6.6 Watts (@Without Amplifier)
<i>Touch Screen</i>	
Resistive Type	USB / RS232 Interface
Resistive Type Support OS	Windows / Linux / DOS / Mac / QNX

<i>Input Signal</i>	
VGA	D-Sub15
DVI	DVI-D
HDMI	1.3a
<i>Audio</i>	
Amplifier	1W@8 $\Omega$ / 2W@4 $\Omega$
Line-In	Stereo Input Phone Jack $\phi$ 3.5
<i>Controls</i>	
Key	5 Buttons
Serial Remote Control	UART / RS232 (Option)
<i>Environment</i>	
Operating Temp. w/o TP	-20~+70 $^{\circ}$ C
Storage Temp. w/o TP	-30~+70 $^{\circ}$ C
Operating Temp. 4W RTP	-5~+60 $^{\circ}$ C
Storage Temp. 4W RTP	-30~+70 $^{\circ}$ C
Operating Temp. 5W RTP	-10~+70 $^{\circ}$ C
Storage Temp. 5W RTP	-30~+70 $^{\circ}$ C



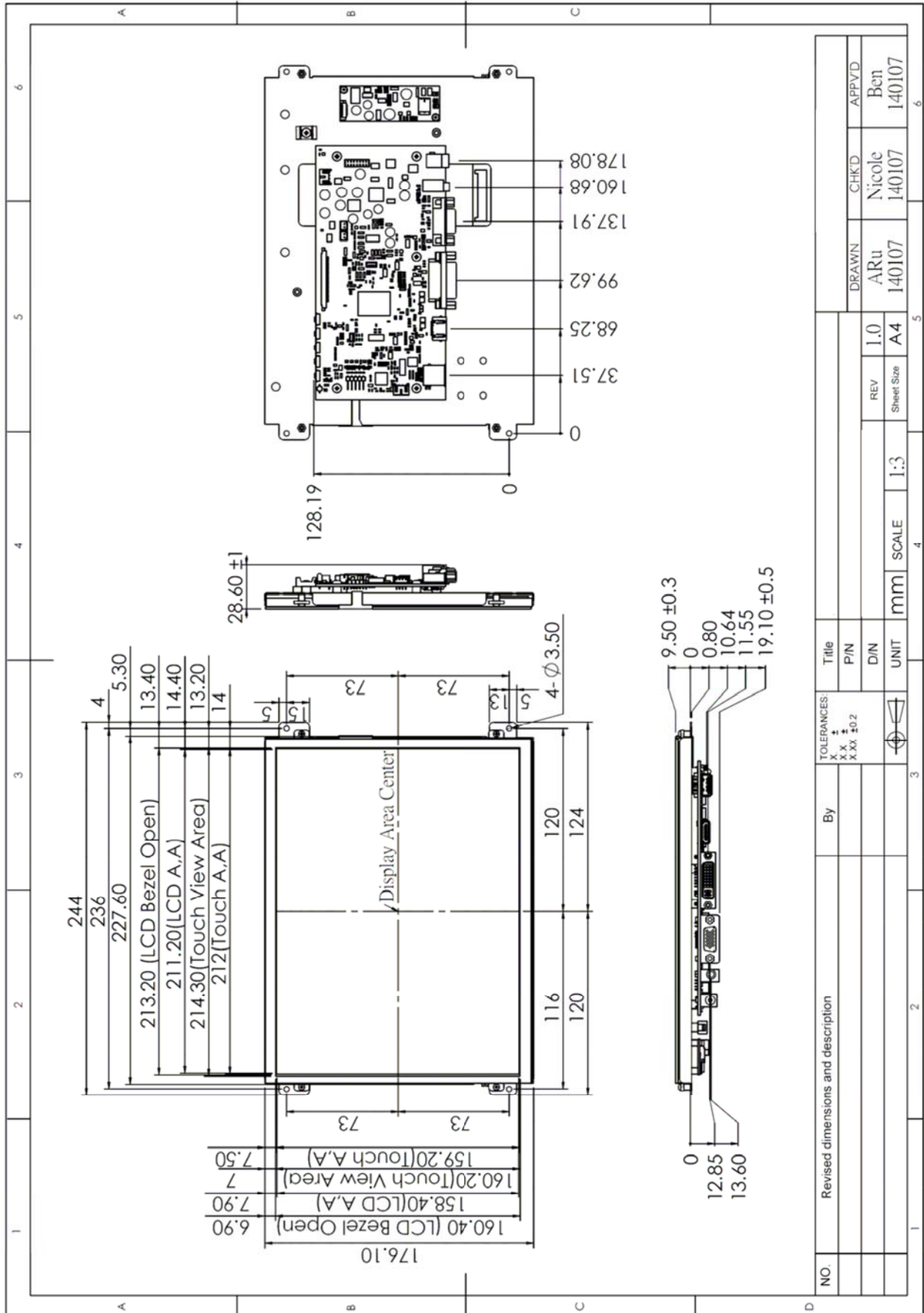
## Order Information

Parameter	LP104X0110-FNR	LP104X0114-FNR	LP104X0115-FNR
VGA	⊙	⊙	⊙
DVI	⊙	⊙	⊙
HDMI	⊙	⊙	⊙
Touch Panel Type	-	4W Resistive	4W Resistive
Touch Screen Interface	-	USB	RS232
Audio Amplifier	⊙	⊙	⊙
Audio Line-In	⊙	⊙	⊙
5 Keys	⊙	⊙	⊙
UART Remote Control	⊙	⊙	⊙
Condition	Standard	Standard	Non-standard

Parameter	LP104X011U-FNR	LP104X011R-FNR
VGA	⊙	⊙
DVI	⊙	⊙
HDMI	⊙	⊙
Touch Panel Type	5W Resistive	5W Resistive
Touch Screen Interface	USB	RS232
Audio Amplifier	⊙	⊙
Audio Line-In	⊙	⊙
5 Keys	⊙	⊙
UART Remote Control	⊙	⊙
Condition	Standard	Non-standard

Parameter	Condition
Ear Phone	Non-standard
RS232 Remote Control	
Back Cover	
External Key	
Light Sensor	
Accessories (Option)	Standard

# Dimension



## Accessories (Option)

Before you begin installing the KIT, please make sure that the following materials have been shipped:



- A. AC to DC Adapter (L:1500mm, 100-240V<sub>AC</sub> 50-60Hz to +12V<sub>DC</sub> @ 3.3A,  $\phi$  2.1)
- B. Power Cord (L:1800mm, Plug Type B for USA)
- C. HDMI Cable (L:2000mm)
- D. DVI Cable (L:1800mm)
- E. VGA Cable (L:1600mm)
- F. USB Cable (L:1800mm)
- G. RS232 Cable (L:1800mm, Null Modem)
- H. AUDIO Cable (L:1800mm)
- I. Touch Screen Driver CD Disk / User Manual
- J. Speaker (2.5W @ 4 $\Omega$  L:400mm \*2 Pieces)