

承 認 書

APPROVAL SHEET

CUSTOMER: MAP ELECTRONICS CO., LTD

CUSTOMER MODEL NO.: MEGHX-462XSFAF-920

DESCRIPTION: 1/4 λ Whip Ant.

REV.: 00

DATE: 2015/6/22

Customer Approval	
-------------------	--



Index.

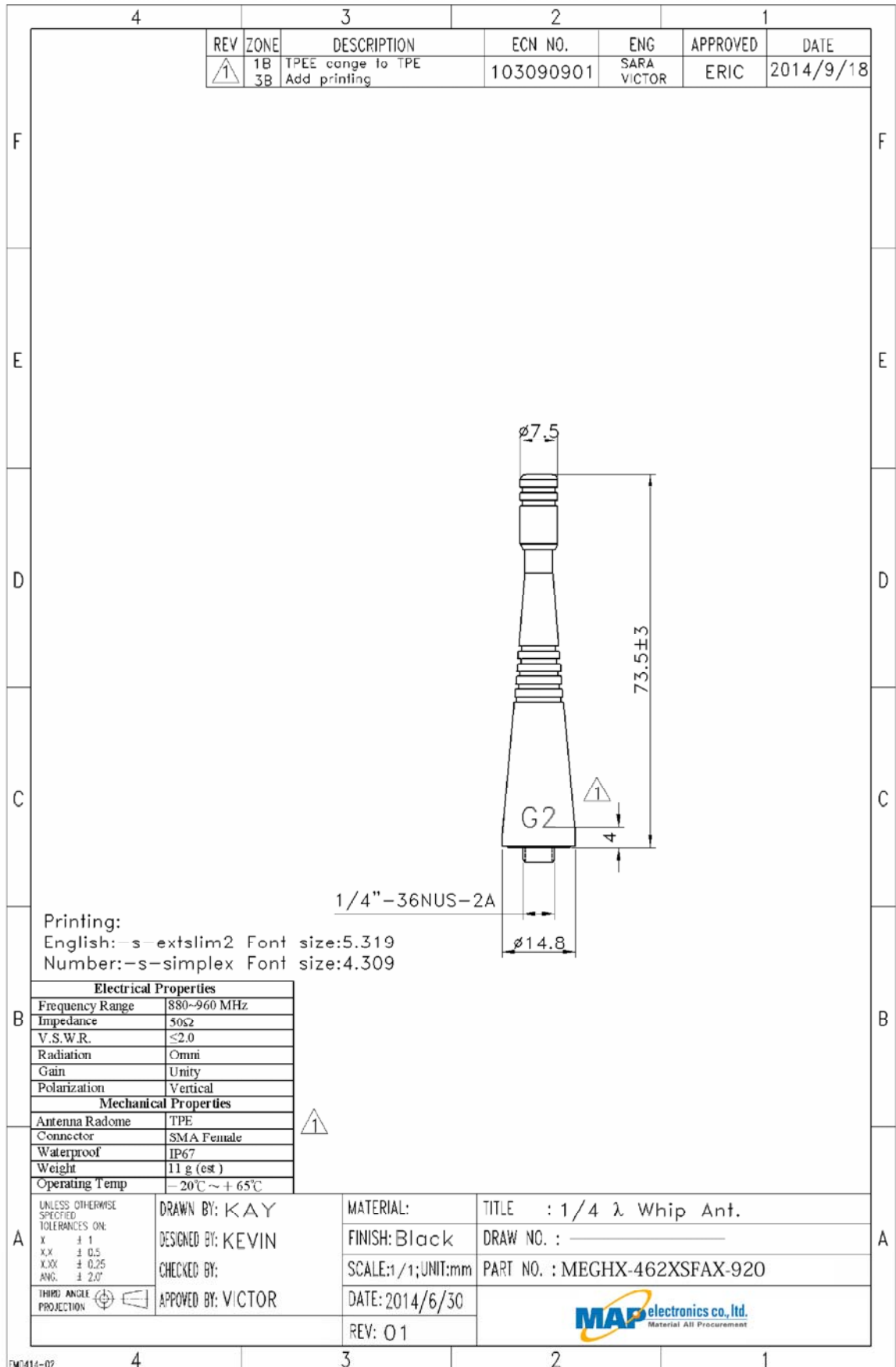
1. Specification	2
1.1 Drawing	2
1.2 Connector	4
<hr/>	
2. Test report	5
2.1 Electrical test	5
2.2 Pattern test	6

Modification History:

Rev.	Date	Content
00	2015/6/22	

1. Specification

1.1 Drawing



1. Specification

1.1 Drawing

Electrical Properties	
Frequency Range	880~960 MHz
Impedance	50Ω
V.S.W.R.	≤2.0
Radiation	Omni
Gain	Unity
Polarization	Vertical
Mechanical Properties	
Antenna Radome	TPE
Connector	SMA Female
Waterproof	IP67
Weight	11 g (est)
Operating Temp	-20°C ~ +65°C

1.2 Connector

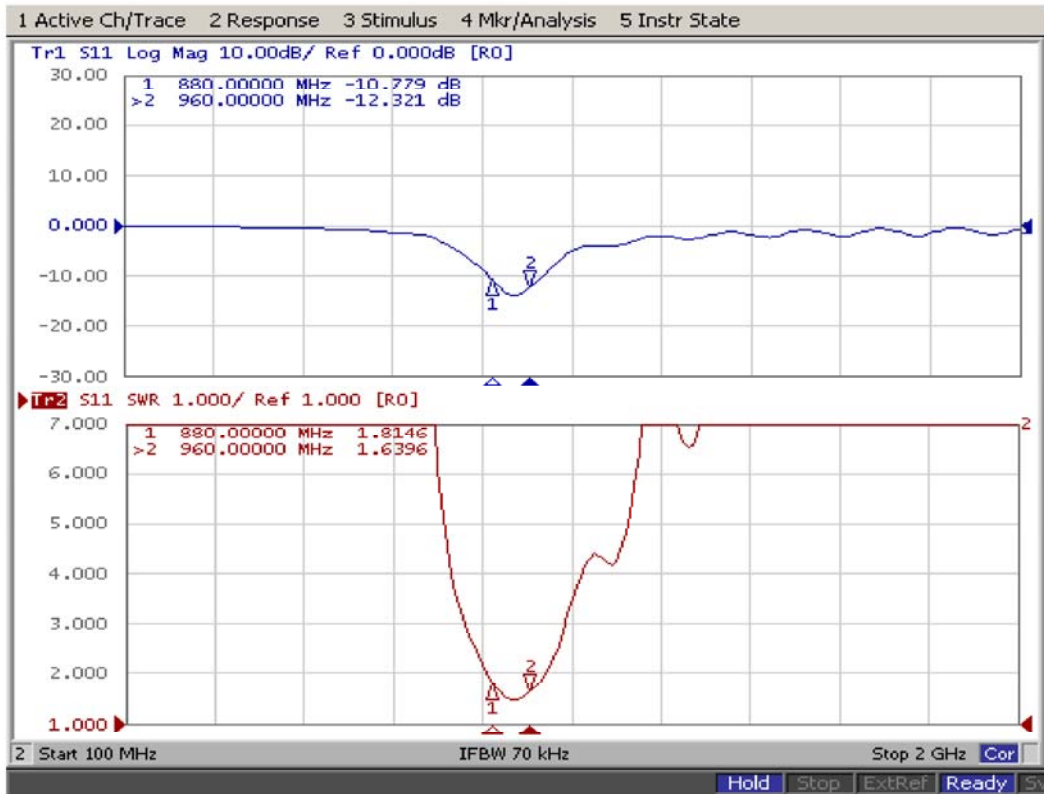
SMA

Specification Data	1) Impedance	50 ohm
	2) Frequency Range	0~6GHz
	3) V.S.W.R.	≤ 1.5
	4) Working Voltage	≤ 250 Vrms
	5) Dielectric Withstanding	≤ 670 Vrms
	6) Voltage Insulation Resistance	≥ 2000 Mega ohm
	7) Contact Resistance	Center contact: 3.0 Milliohms (Max.) Outer contact: 2.0 Milliohms (Max.)
	8) Recommended coupling nut torque	4.0~8.8 in. lbs (0.45~0.99Nm)
	9) Coupling nut retention force	≥ 50 lbs (222N)
	10) Contact captivation force	≥ 5 lbs (22.2N)
	11) Durability (mating)	≥ 500 cycles

Environmental Data	1) Operating Temperature	$-65^{\circ}\text{C} \sim +165^{\circ}\text{C}$
	2) Thermal Shock	MIL-STD-202,Method 107, Condition E
	3) Corrosion	MIL-STD-202,Method 101, Condition E
	4) Shock	MIL-STD-202,Method 213, Condition I
	5) Vibration	MIL-STD-202,Method 204, Condition C
	6) Moisture Resistance	MIL-STD-202,Method 106

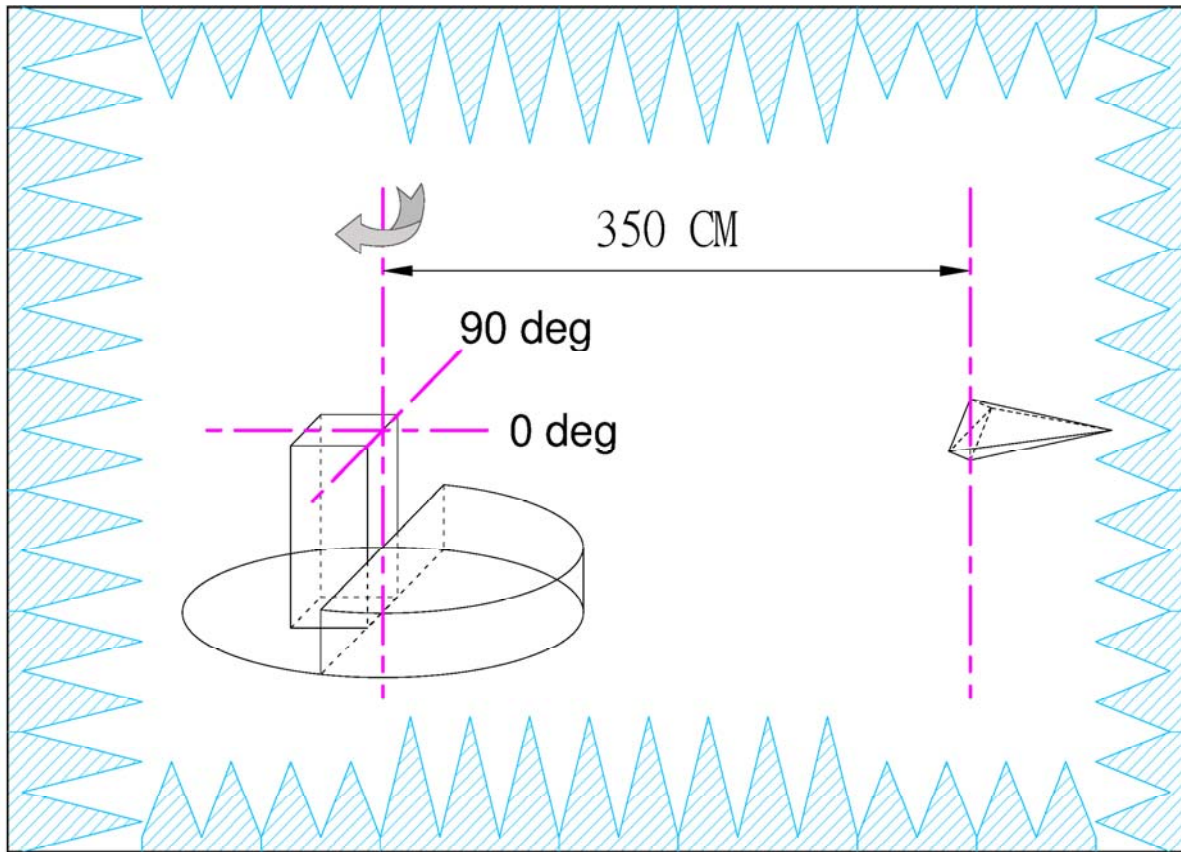
Material Specifications	Material Data	Material
	1) Body	Brass
	2) Contact	Brass
	3) Insulator	Teflon or Delrin

Return loss



V.S.W.R.

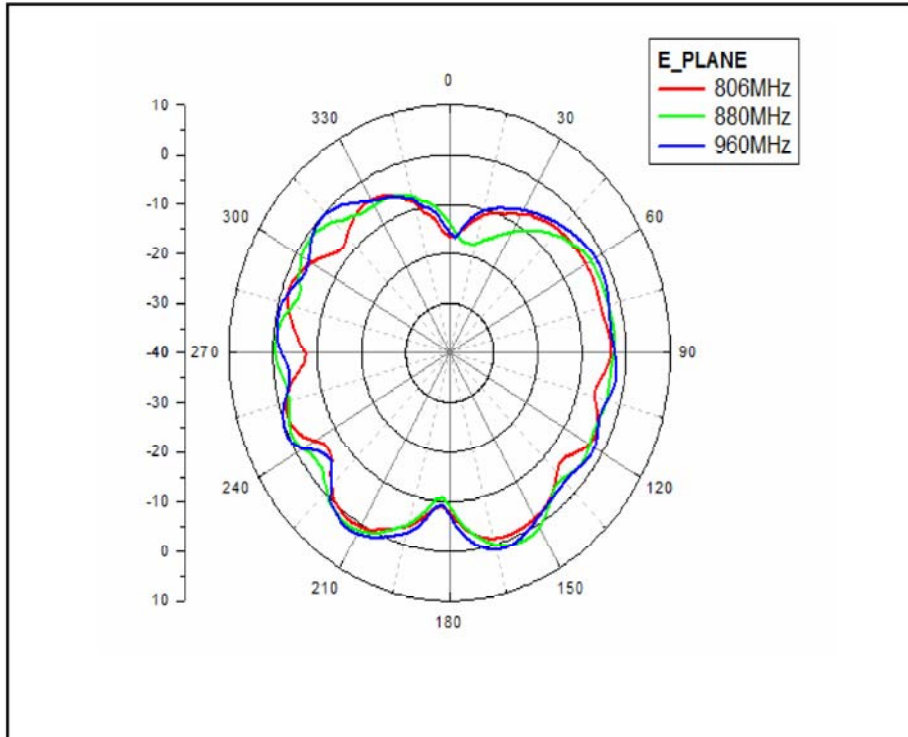




Test Equipment

- Anechoic chamber: 100MHz~6GHz 8*6*6m (※ 1m Quiet zone at 800MHz)
- Source Antenna: ETS-3164 Dual Polarized Horn
- Network Analyzer: Agilent E5071B 100kHz~8.5GHz

E-plane



H-plane

