



SENSITIVITY	靈 度
SENSITIVITY REDUCTION	靈敏度衰減
FREQUENCY	頻 率
MAX. WORKING VOLTAGE	最大工作電壓
CURRENT CONSUMPTION	電流消耗
S/N RATIO	信 噪 比
STORAGE TEMPERATURE	儲存溫度
WEIGHT	重 量

Schematic Diagram 測音器路圖

$V_{cc} = 2.0V$ ,  $R_L = 2.2K\Omega$

||  $-38 \pm 3dB$  ||  $-40 \pm 3dB$  ||  $-42 \pm 3dB$  ||  $-44 \pm 3dB$

$F = 1KHz$   $0dB = 1V/Pa$  Within

3dB at 1.5V compare to 3.0V

50~16,000Hz

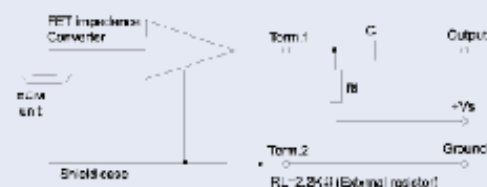
Max. 10V

Max. 0.5mA

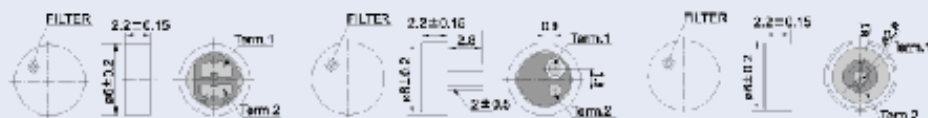
More than 60dB

25°C to +70°C

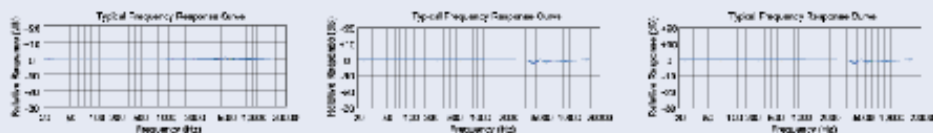
Max. 1.0gm



Dimensions (Unit: mm ± 0.2) 尺 寸 圖



Typical Frequency Response Curve 測音器響應圖



FEATURES

特色

- Omnidirectional type 全指向性
- Ultra thin 超薄
- For GSM, PDA....Dual Band applications 適用於GSM、PDA、雙頻機、等

OBO-64SN-0B

OBO-64KA-0B

OBO-64EC-0B

新到各類型 Condenser Microphone