

For reference only

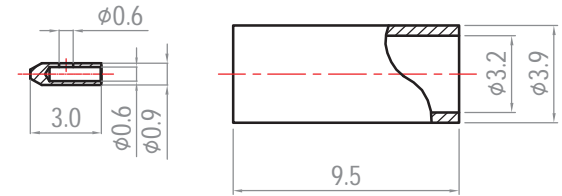
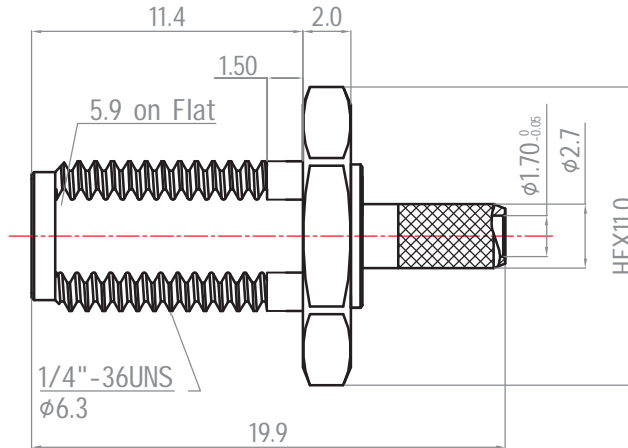
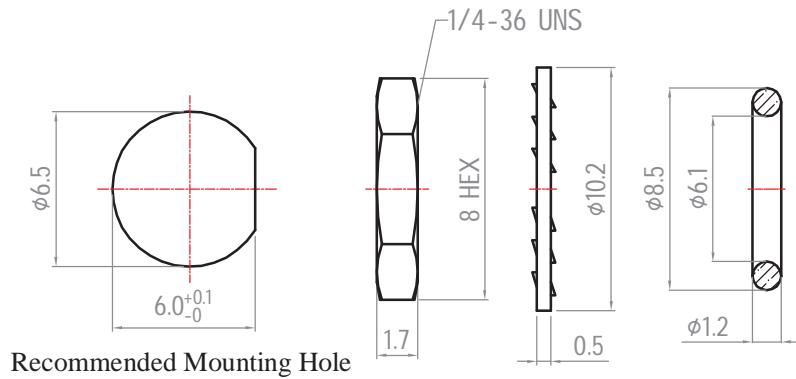
Revisions

Note: Revisions B; B-1; B-2..... On behalf of official Drawing.
Revisions 1; 2; 3; 4..... On behalf of experiment's Drawing.

ISS	Symbol	Description	Date
B		CHE for New Drawing Frame & New PN System	2006/07/11

Notes :

- Any Electrical, Mechanical or Environmental Test Per MIL-C-39012 Should be Spotlited, as We May Not Have All Testing Equipment to Cover All of It.
- All Metal Materials Are in Compliance with RoHS 2 Directive 2011/65/EU Annex III Section 6 Paragraph.
- Recommended Crimped Hand Tool : **HT-H116N**
- Waterproof Class : **IP 67**
- Recommended Screwing Torque 40 lbf.in max.



Electrical :

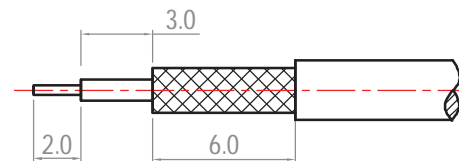
Impedance : 50 ohm
Frequency Range : 0~12.4 GHz .
Voltage Rating : 500 V rms (depending on cable)
Insulator Resistance : ≥ 5 G Ω
Dielectric Withstanding Voltage : 1000 V rms .
Contact Resistance : Center Contact ≤ 3 m Ω .
Outer Contact ≤ 2.5 m Ω .

Environmental :

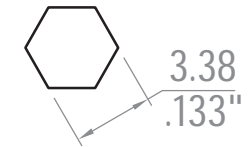
Temperature Range : -65°C to 165°C
Corrosion(Salt Spray) : MIL-STD-202, Method 101, Cond. B
Thermal Shock : MIL-STD-202, Method 107, Cond. B
Mechanical : MIL-STD-202, Method 213, Cond. I
Vibration : MIL-STD-202, Method 204, Cond. D

Mechanical :

Mating : 1/4-36 UNS Screw-on Coupling.
Recommended Mating Torque : 7.1~9.7 lbs
Coupling Nut Retention Force : ≥ 60.7 lbs



Recommended Cable Stripping Dimensions



Recommended Crimping Dimensions for Ferrule

Finish [Unit of Plating Thickness Is in Micro Inch(μ)]

- Nickel Plating Thk. : 50 μ " min. (Under Plating)
- Gold Plating Thk. : 2 μ " max. (Over Finish 1)

8	Nut	Brass	Finish 1/2		
7	Washer	Brass	Finish 1/2		
6	O-Ring	NBR	Black		
5	Ferrule	Brass	Finish 1/2		
4	Center Contact	P. Bronze	Finish 1/2		
3	Inner Contact	Brass	Finish 1/2		
2	Insulator	PTFE	None		
1	Body	Brass	Finish 1/2		
ITEM	Description	Material	Finish	Part Number	QTY

Scale	Abbr.	Date	Rev.	DWG. NO.	TITLE	
NTS	ST	2016/08/29	B	S212P4G01-M-5	SMA S/T-O Jack, Single Crimp Type (IP67) for RG174,188,316 ; B7805A ; URM95 Cable	
Tolerances :				Customer P/N:		<p>Proprietary Note This document contains information proprietary to MAP, which is either copyrighted, or patent applied for, and / or protected by trade secret laws. This document or parts thereof, may not be used, disclosed or reproduced in any form by any method, or for any purpose, without the written permission of MAP, Japan.</p>
.X ± 0.2				All Dimensions in mm (Unless Otherwise Specified)		
.XX ± 0.1		.XXX ± 0.05		Drawn		
Mark		Ryan G. Sun		Checked		
2016/08/29		2016/08/29		Approved		