

1. Specification & Dimension

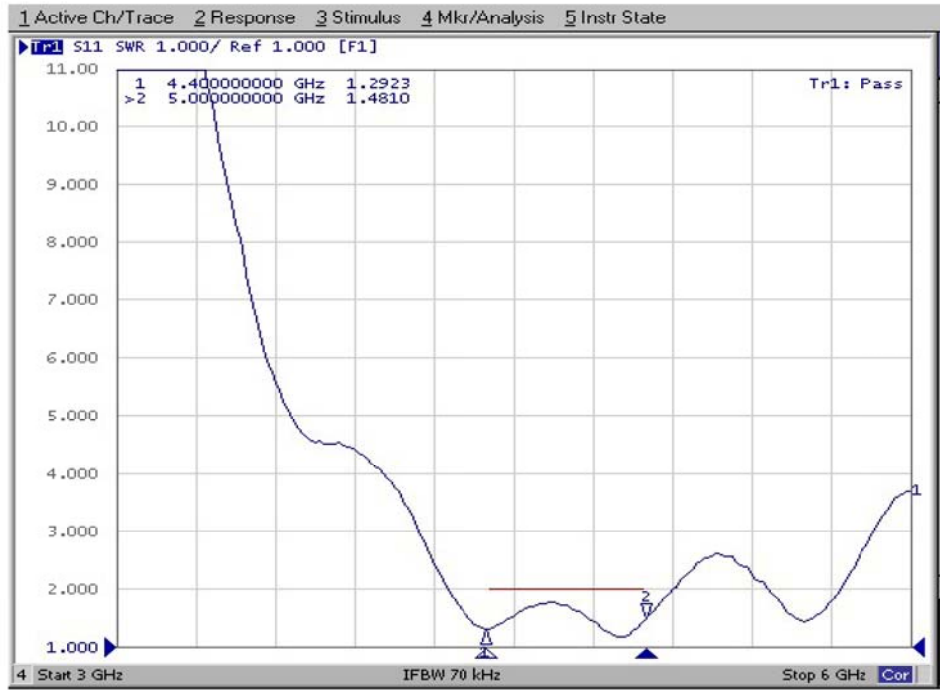
		F	E	D	C	B	A																																						
					REV ZONE	DESCRIPTION	ECN NO.	ENG	APPROVED	DATE																																			
1																																													
2																																													
3																																													
3		<table border="1"> <thead> <tr> <th colspan="2">Electrical Properties</th> </tr> </thead> <tbody> <tr> <td>Frequency Range</td> <td>4400~5000 MHz</td> </tr> <tr> <td>Impedance</td> <td>50Ω</td> </tr> <tr> <td>V.S.W.R.</td> <td>≤2.0</td> </tr> <tr> <td>Radiation</td> <td>Directional</td> </tr> <tr> <td>Gain</td> <td>8dBi</td> </tr> <tr> <td>Polarization</td> <td>±45°</td> </tr> <tr> <td>Wave Length . type</td> <td>Patch</td> </tr> <tr> <td>Beam Width(±3dB)</td> <td>50°±5°@E-Plane 70°±5°@H-Plane</td> </tr> <tr> <td>Test Ground Size</td> <td>N/A</td> </tr> </tbody> </table>								Electrical Properties		Frequency Range	4400~5000 MHz	Impedance	50Ω	V.S.W.R.	≤2.0	Radiation	Directional	Gain	8dBi	Polarization	±45°	Wave Length . type	Patch	Beam Width(±3dB)	50°±5°@E-Plane 70°±5°@H-Plane	Test Ground Size	N/A																
Electrical Properties																																													
Frequency Range	4400~5000 MHz																																												
Impedance	50Ω																																												
V.S.W.R.	≤2.0																																												
Radiation	Directional																																												
Gain	8dBi																																												
Polarization	±45°																																												
Wave Length . type	Patch																																												
Beam Width(±3dB)	50°±5°@E-Plane 70°±5°@H-Plane																																												
Test Ground Size	N/A																																												
4		<table border="1"> <thead> <tr> <th colspan="2">Mechanical Properties</th> </tr> </thead> <tbody> <tr> <td>Radome Material</td> <td>PBT</td> </tr> <tr> <td>Connector Type</td> <td>N Jack</td> </tr> <tr> <td>IP Level</td> <td>IP-65</td> </tr> <tr> <td>Dimension</td> <td>L=□260±10mm</td> </tr> <tr> <td>Operating Temp.</td> <td>-30℃~+70℃</td> </tr> <tr> <td>Storage Temp.</td> <td>-40℃~+85℃</td> </tr> </tbody> </table>								Mechanical Properties		Radome Material	PBT	Connector Type	N Jack	IP Level	IP-65	Dimension	L=□260±10mm	Operating Temp.	-30℃~+70℃	Storage Temp.	-40℃~+85℃																						
Mechanical Properties																																													
Radome Material	PBT																																												
Connector Type	N Jack																																												
IP Level	IP-65																																												
Dimension	L=□260±10mm																																												
Operating Temp.	-30℃~+70℃																																												
Storage Temp.	-40℃~+85℃																																												
		<table border="1"> <thead> <tr> <th colspan="2">UNLESS OTHERWISE SPECIFIED TOLERANCES ON:</th> <th colspan="2">DRAWN BY: DORIS</th> </tr> </thead> <tbody> <tr> <td>X</td> <td>± 1</td> <td>X</td> <td>DESIGNED BY: SARA</td> </tr> <tr> <td>XX</td> <td>± 0.5</td> <td>XX</td> <td>CHECKED BY: KY</td> </tr> <tr> <td>XXX</td> <td>± 0.25</td> <td>XXX</td> <td>APPROVED BY: MATT</td> </tr> <tr> <td>AVG.</td> <td>± 2T</td> <td></td> <td></td> </tr> </tbody> </table>		UNLESS OTHERWISE SPECIFIED TOLERANCES ON:		DRAWN BY: DORIS		X	± 1	X	DESIGNED BY: SARA	XX	± 0.5	XX	CHECKED BY: KY	XXX	± 0.25	XXX	APPROVED BY: MATT	AVG.	± 2T			<table border="1"> <thead> <tr> <th colspan="2">MATERIAL:</th> <th colspan="2">TITLE :</th> </tr> </thead> <tbody> <tr> <td>FINISH:</td> <td></td> <td colspan="2">#026 4400~5000MHz MIMO 4X4 Antenna</td> </tr> <tr> <td>SCALE:1/1:UNIT:mm</td> <td></td> <td>DRAW NO. :</td> <td></td> </tr> <tr> <td>DATE:2021/3/9</td> <td></td> <td>PART NO. :</td> <td>MEKPX-026XNF9-4X4P-44005000</td> </tr> <tr> <td>REV: A</td> <td></td> <td colspan="2"> </td> </tr> </tbody> </table>		MATERIAL:		TITLE :		FINISH:		#026 4400~5000MHz MIMO 4X4 Antenna		SCALE:1/1:UNIT:mm		DRAW NO. :		DATE:2021/3/9		PART NO. :	MEKPX-026XNF9-4X4P-44005000	REV: A			
UNLESS OTHERWISE SPECIFIED TOLERANCES ON:		DRAWN BY: DORIS																																											
X	± 1	X	DESIGNED BY: SARA																																										
XX	± 0.5	XX	CHECKED BY: KY																																										
XXX	± 0.25	XXX	APPROVED BY: MATT																																										
AVG.	± 2T																																												
MATERIAL:		TITLE :																																											
FINISH:		#026 4400~5000MHz MIMO 4X4 Antenna																																											
SCALE:1/1:UNIT:mm		DRAW NO. :																																											
DATE:2021/3/9		PART NO. :	MEKPX-026XNF9-4X4P-44005000																																										
REV: A																																													
R0000A		F	E	D	C	B	A																																						

2. Test Condition & Report

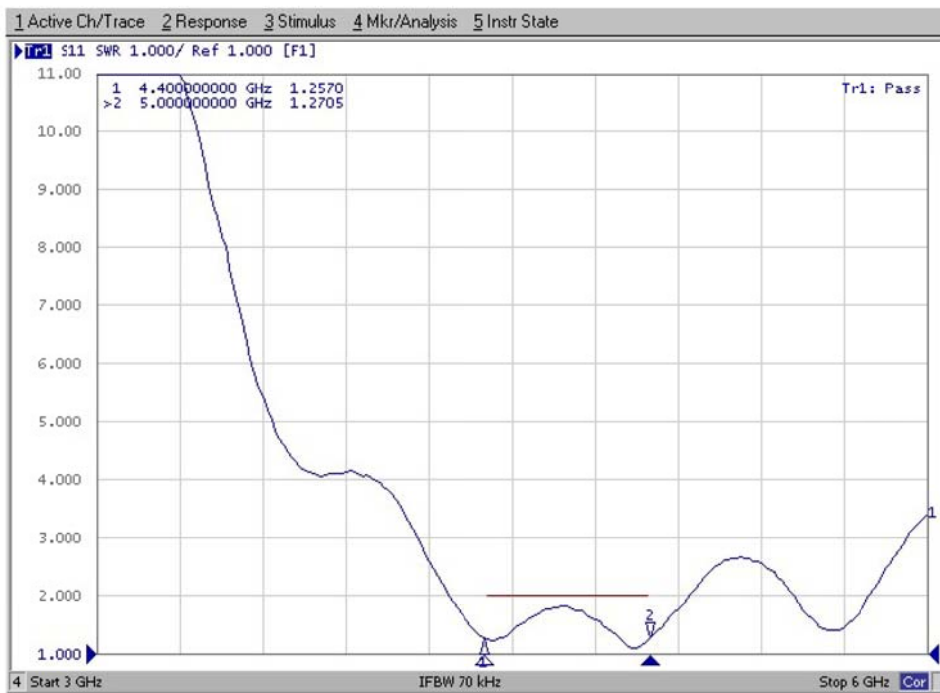
2.1 V.S.W.R

V.S.W.R.

Port 1



Port 2



2. Test Condition & Report

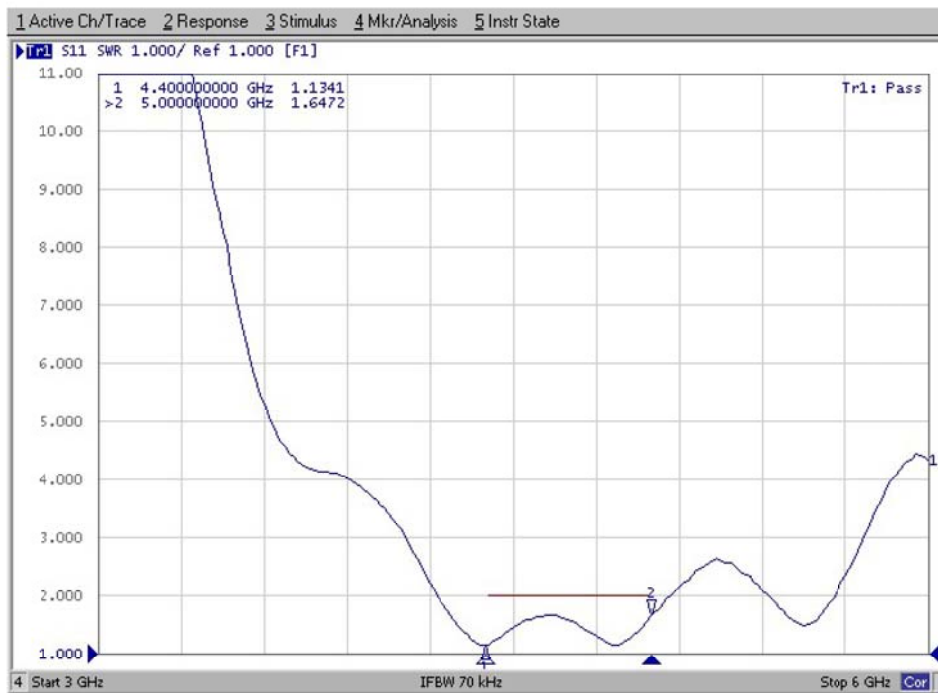
2.1 V.S.W.R

V.S.W.R.

Port 3



Port 4



2. Test Condition & Report

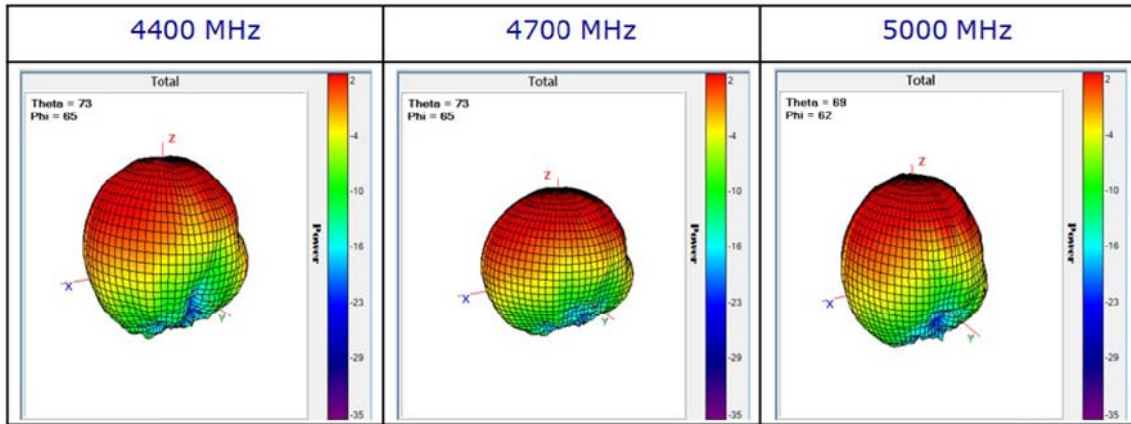
2.1 V.S.W.R

V.S.W.R.

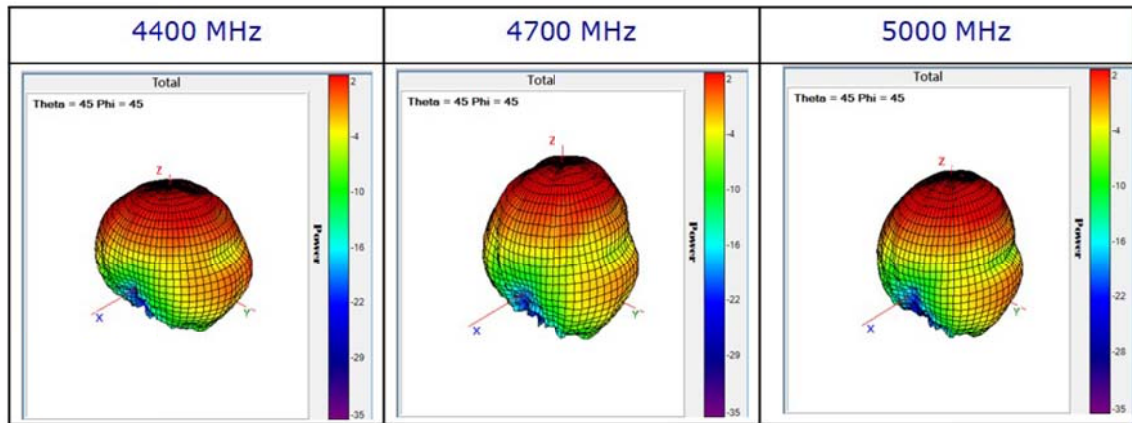


2.2 Pattern

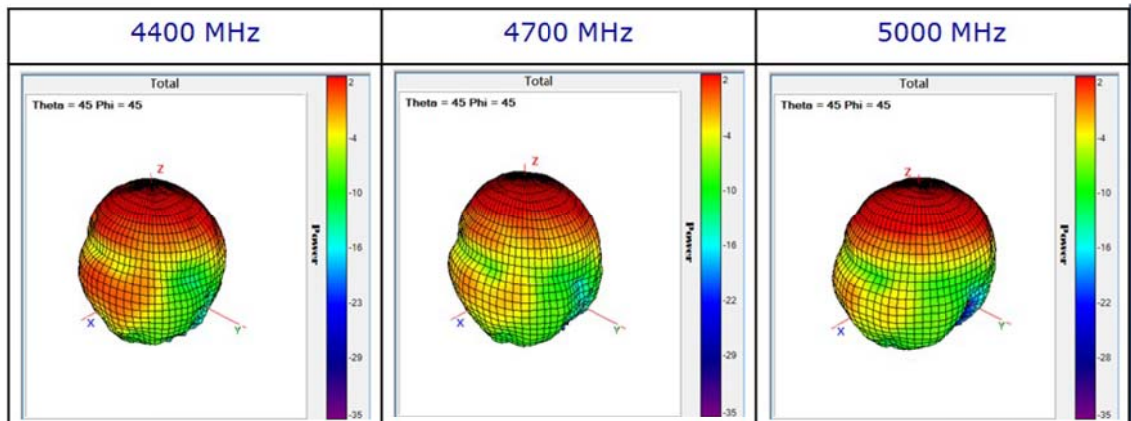
Port 1



Port 2

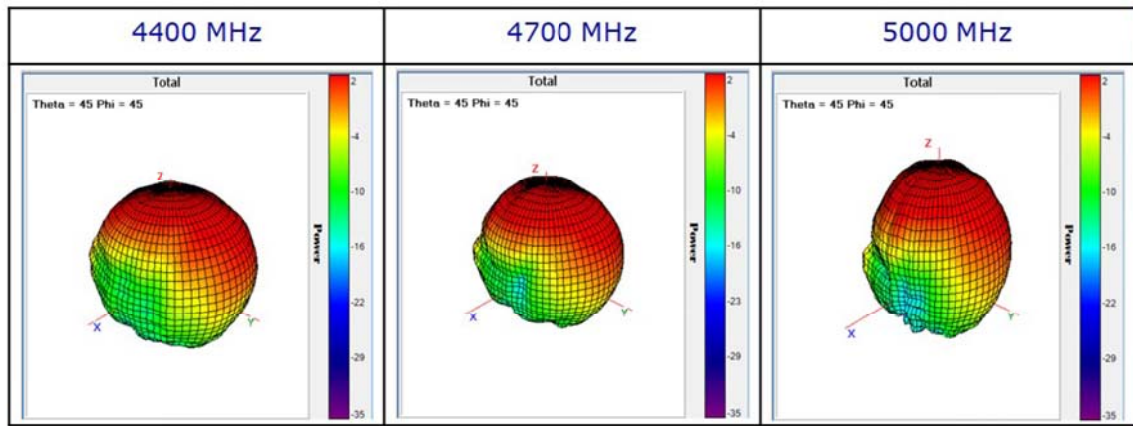


Port 3

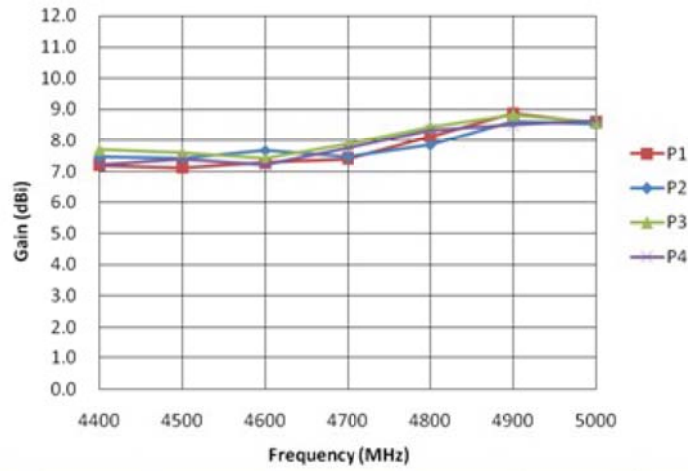


2.2 Pattern

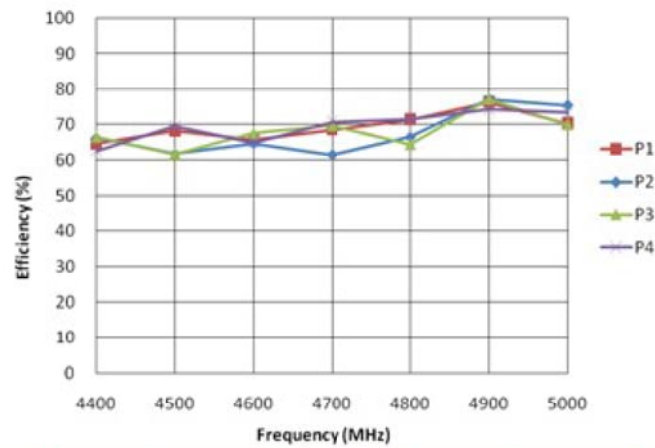
Port 4



2.3 Gain and Efficiency



Frequency (MHz)	4400	4500	4600	4700	4800	4900	5000
Port 1 (dBi)	7.19	7.11	7.28	7.4	8.12	8.86	8.56
Port 2 (dBi)	7.47	7.42	7.67	7.47	7.85	8.60	8.53
Port 3 (dBi)	7.70	7.60	7.41	7.88	8.43	8.82	8.59
Port 4 (dBi)	7.21	7.40	7.21	7.75	8.33	8.50	8.63



Frequency (MHz)	4400	4500	4600	4700	4800	4900	5000
Port 1 (dBi)	64.5	68.2	65.8	68.5	71.3	76.3	70.3
Port 2 (dBi)	66.3	61.8	64.6	61.4	66.4	77.2	75.5
Port 3 (dBi)	66.5	61.7	67.6	69.7	64.4	77.2	70.0
Port 4 (dBi)	62.5	69.4	64.9	70.7	71.4	74.3	73.4